

THE OFFICIAL VISITORS GUIDE 2020

TOWN OF MESILLA

NEW MEXICO



WWW.MESILLANM.GOV



Mike Groves

STAY AND ENJOY HISTORIC OLD MESILLA HACIENDA STYLE!



ARRACHERA
STEAK



575.652.4953

HaciendaDeMesilla.com

1891 Avenida de Mesilla, Mesilla, NM

CASUAL ELEGANCE
IN DINING & LODGING

Welcome Bienvenidos

It is with great pleasure that I welcome you to the Town of Mesilla, where events are not a trend, they're tradition and where history is alive and well!

The Town of Mesilla is one of the oldest and most visited communities in southern New Mexico, where the hospitality is warm and the chile is hot. It is no wonder The Culture Trip, a renowned international online magazine, named Mesilla one of the top 10 small towns in the country to visit. The Town of Mesilla was also named the 2013 and 2014 Official Best Vacation Getaway in New Mexico. It is easy to see why, with over fifty unique stores, boutiques & galleries, award winning restaurants and cafes, all within walking distance of one another.

Our plaza, the heart of Mesilla, has been witness to many historical events, most significant was El Tratado de La Mesilla, the signing of the Gadsden Purchase, which transferred lands, including the Town of Mesilla, from Mexico to the United States in 1854. Today, many traditional events are still held in the plaza, including our annual Cinco de Mayo & Diez y Seis de Septiembre Fiestas, our three day Dia de Los Muertos Celebration and our annual Christmas Eve Lighting of the Luminarias ceremony.

So, leave your passport and worries at home and come visit us. Old Mesilla, shop and dine...the rest is history!

Sincerely,

Nora L. Barraza
Nora Barraza
Mayor, Town of Mesilla

Es para mí un gran honor darle la bienvenida al pueblo de Mesilla, donde los eventos no son una moda sino una tradición y donde la historia está viva y en excelente forma.

El pueblo de Mesilla es una de las comunidades más antiguas y visitadas en el sur de Nuevo México, donde la hospitalidad es cálida y el chile es muy picante. No es ninguna sorpresa que The Culture Trip, una renombrada revista digital internacional, colocara a Mesilla como uno de los diez pequeños pueblos por visitar en el país. El pueblo de Mesilla fue también nombrado el Mejor Escape Vacacional de Nuevo México en 2013 y 2014. Es fácil ver por qué: cuenta con más de cincuenta tiendas, boutiques y galerías



únicas, así como con restaurantes y cafés galardonados, todos ellos en una distancia caminable.

Nuestra plaza, el corazón de Mesilla, ha sido testigo de diversos eventos históricos, principalmente el Tratado de La Mesilla, la firma de la Compra Gadsden, por el cual se traspasaron territorios de México a los Estados Unidos en 1854, incluyendo el pueblo de Mesilla. Al día de hoy, la plaza alberga diversos eventos tradicionales, incluyendo nuestras

fiestas anuales del Cinco de Mayo y del Dieciséis de Septiembre, nuestra celebración del Día de Muertos durante tres días y nuestra ceremonia anual del Encendido de las Luminarias en Nochebuena.

Así que deje su pasaporte y preocupaciones en casa y visítenos. Antiguo Mesilla, compra y come... ¡el resto es historia!

Sinceramente

Nora L. Barraza
Nora Barraza
Mayor, Town of Mesilla



What's Inside

- 8** HISTORY
- 12** TOURS
- 14** DAY TRIPS
- 18** MERCHANTS
- 20** MAP
- 22** CALENDAR OF EVENTS
- 24** FARMER'S MARKET
- 25** POLITICAL HISTORY
- 26** A LITTLE MORE HISTORY
- 28** GALLERIES
- 29** BILLY THE KID
- 30** DINING
- 32** EXPERIENCE MESILLA
- 34** ACCOMMODATIONS
- 36** MUSEUMS
- 38** FACILITIES

Map 8



Freshly made Salsa Bar

Local Gifts from our Mercado

Catering

OPEN
Mon-8:00am-2:30pm
Tue-Sun-8:00am-9:00pm

1950 Calle del Norte
Mesilla, NM

~ Voted Best Green Enchiladas ~

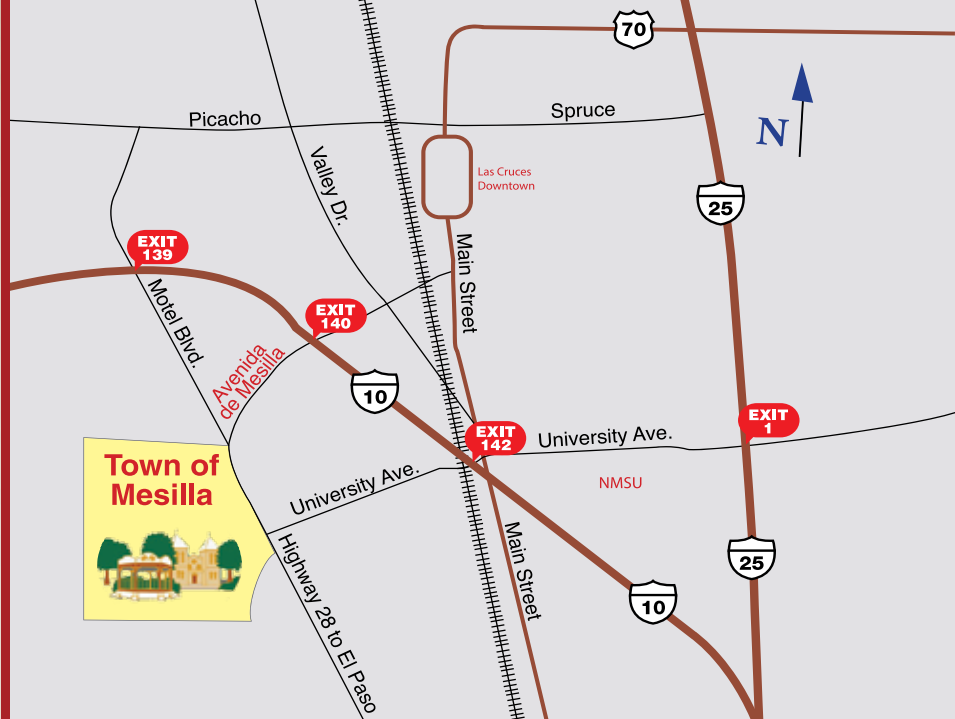
Map 9



- Mexican Hot Dogs, Burgers & Top-Dog Mexican Food.
- Big Selection of Draft & Bottled Beer.
- Well-Behaved Pets on Leash Always Welcome on Patio.

www.andelerestaurante.com
Open Daily • 11am-9pm

575-526-1271
1983 Calle Del Norte • Mesilla, NM



Exits to Old Mesilla

FROM ALBUQUERQUE - I-25 EXIT 1
Turn right on University Avenue
Drive West approximately 6 miles

FROM PHOENIX I-10 - MESILLA EXIT 140
Turn right on Avenida de Mesilla - 1 Mile

FROM EL PASO - TAKE I-10 WEST
Approximately 40 miles to Mesilla Exit 140,
Turn left on Avenida de Mesilla - 1 Mile

US 70
Take I-25 South to I-10 West,
to Mesilla Exit 140,
Turn left on Avenida de Mesilla - 1 Mile

Awards & Recognitions

- 2018 FOURTEEN CHURCHES THAT WILL LEAVE YOU SPEECHLESS
(OnlyInYourState.com)
- 2018 THE 8TH COZIEST TOWN IN NEW MEXICO
(OnlyInYourState.com)
- 2017 BUDGET FRIENDLY ROAD TRIPS IN NM
- 2016 TOP 6 BEST HISTORIC PLAZAS IN NM
- 2013/2014 OFFICIAL BEST VACATION GETAWAY
- TOP 10 SMALL TOWNS TO VISIT



VISITOR'S CENTER

2231 Avenida de Mesilla,
Mesilla NM, 88046
Open Daily from:
8:00am to 5:00pm
(575) 524-3262

FOLLOW US ON:



www.mesillanm.gov

Map 41

Gadsden Museum Celebrating 88 years



1875 Boutz Rd

Shown by appointment (575) 526-6293

Established in 1931 and dedicated to Col. Albert J. Fountain. Artifacts dating back to 1500s. Replica of the jail housing Billy the Kid.



575-526-8667
www.RistramanChile.com
Alexander873@me.com
2531 Avenida de Mesilla
La Mesilla, NM 88005

**RISTRAMNN
CHILE CO.**



Eight generations of preserving Mesilla. ¡Viva La Mesilla!

Map 85



ON THE PLAZA IN
HISTORIC OLD MESILLA

OVER 20 LOCAL ARTISTS
FEATURED

OPEN EVERYDAY
11-6



Shop at: www.JulienneJewelryOnline.com





History of Mesilla

The history of Mesilla is a complex one and there are many accounts of how things actually happened. What we know for sure is that hundreds of years later, Mesilla has maintained its quaint, charming appeal of long ago.

In the early to mid 1800s, the Camino Real Trail that traveled from Chihuahua to Santa Fe, and the Butterfield Stagecoach from San Antonio to San Diego, turned the region into a hub for commerce and transportation in the region. At this point, the area of Mesilla was still uncharted territory; not many settlers had yet made it their home.

It was the Treaty of Guadalupe Hidalgo in 1848 that attracted early settlers to Mesilla and thus began populating the town. It was established as a colony by the early 1850s, around the time that the United States and Mexico settled the boundary dispute that arose from the Treaty of Guadalupe Hidalgo. The settlement, known as the Gadsden Purchase, was effectuated on November 16, 1854 in Mesilla by taking down the Mexican flag and raising the United States flag.

In late July 1861, 300 Texas troops led by Confederate Col. John Baylor captured Fort Fillmore, just outside of Mesilla. After defeating the Union troops Baylor named the town of

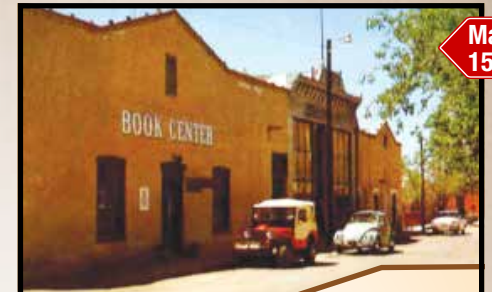


Mesilla as the capital of the new Confederate Territory of Arizona. The Civil War ended in Mesilla in 1862 after Colonel Baylor and the confederate troops retreated to Texas.

By the 1870s Mesilla was in her prime and there were several stores, doctors, lawyers, carpenter shops as well as other establishments. However, the hustle and bustle of Mesilla not only attracted businessmen and commerce, it also attracted outlaws like Billy the Kid. It was in Mesilla that the Kid was tried and sentenced to death by hanging in 1881.

With the booming commerce and constant traffic, Mesilla was actually at one time the largest U.S. town between San Antonio and San Diego. But, the once thriving town, and the obvious choice for a railroad, was stunted when, in 1881, it was decided that the incoming railway would be constructed through the neighboring town of Las Cruces instead.

Today, many of Mesilla's residents are direct descendants of its early settlers. The town and its people are a true representation of the community's Native-American, Spanish, Mexican and Anglo-American heritage.



Map 15

MESILLA BOOK CENTER

Books about the West, Mexico, Horses, Cowboys, Native Americans, & more. Children's books & toys, gifts and more. "Some of the best books never make the bestseller lists"

(575) 526-6220
2360 Calle de Principal

Tue.- Sat. 11am-5:30pm
Sun. 1pm-5pm
Monday 11am-5:00pm



Map 112

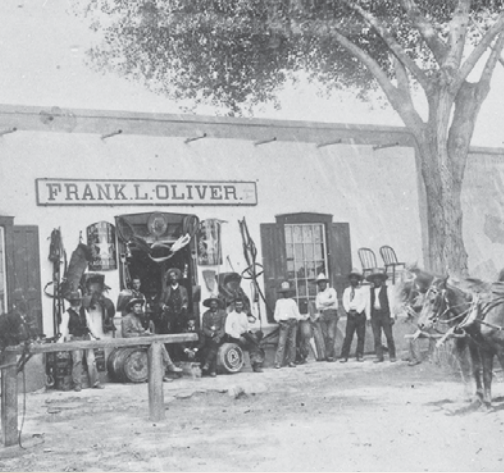
The Potteries Dinnerware, Lighting and Paintings

The Potteries is a working artist studio. Bill Cook makes architectural lighting from earthenware clay he digs himself. Janice Cook has sculpture and porcelain dinnerware in bright colors. Jeanne Rundell is a painter known for her whimsy.

(575) 524-0538
2260 Calle de Santiago, Box 64
www.thepotteriesmesilla.com

Tues.-Sat. 11am-5pm
Closed Sunday & Monday





Historia

De La Mesilla

La historia de Mesilla es compleja y existen diversas versiones de cómo es que sucedieron las cosas. Lo que tenemos por cierto es que cientos de años más tarde, Mesilla ha mantenido su pintoresco encanto de antaño.

Desde principios y hasta mitades de los años 1800, el Camino Real de Tierra Adentro que iba desde Chihuahua hasta Santa Fe y la diligencia Butterfield de San Antonio a San Diego, convirtieron a la región en un eje comercial y de transporte. En este punto, el área de Mesilla era territorio inexplorado y no muchos colonos se habían asentado allí.

El tratado de Guadalupe Hidalgo fue lo que atrajo en 1848 a los primeros colonos a Mesilla, comenzando así la población del lugar. Se estableció como colonia a principios de la década de 1850, durante los tiempos en que Estados Unidos y México mantuvieron una disputa territorial que surgió a partir del Tratado de Guadalupe Hidalgo. El acuerdo, conocido como la Venta de la Mesilla (o la compra de Gadsden en Estados Unidos) se realizó el 16 de noviembre de 1854 en Mesilla al retirarse la bandera mexicana e izarse la norteamericana.

A finales de julio de 1861, trescientas tropas texanas encabezadas por el coronel confederado John Baylor tomaron el Fuerte Fillmore, en las afueras de Mesilla. Tras vencer a las tropas de la Unión, Baylor nombró al pueblo de Mesilla como capital del nuevo Territorio

Confederado de Arizona. La Guerra Civil terminó en Mesilla en 1862, luego de que el coronel Baylor y las tropas confederadas se retiraran a Texas.

Para la década de 1870, Mesilla estaba en sus mejores momentos y contaba con tiendas, médicos, abogados, carpinterías y otros establecimientos. Sin embargo, el ir y venir de Mesilla atrajo no sólo a hombres de negocios y comerciantes, sino también a forajidos como Billy The Kid. Fue en Mesilla donde el Kid fue llevado a juicio y sentenciado a muerte en la horca en 1881.

Con el comercio floreciente y el tráfico constante, Mesilla fue de hecho la población norteamericana más grande entre San Antonio y San Diego. Pero la alguna vez floreciente ciudad y obvia opción para recibir al ferrocarril quedó pasmada cuando, en 1881, se decidió que las vías se construyeran a través de Las Cruces.

Debido a su importancia histórica tanto para el estado como para la nación, la Antigua Plaza de Mesilla fue declarada monumento estatal de Nuevo México el 10 de septiembre de 1957. Inicialmente se enlistó en el Registro Nacional en enero de 1982 como Punto Histórico Nacional. Luego, el distrito histórico de Mesilla fue añadido al Registro Nacional en febrero de 1985.

Al día de hoy, muchos de los residentes de Mesilla son descendientes directos de los primeros colonos. El pueblo y su gente son una verdadera representación del patrimonio nativoamericano, español, mexicano y angloamericano de la comunidad.




Map
110

Southern New Mexico's
Premiere Boutique since 1981!
Mercado de Mesilla
575-525-9177
www.eiboutique.com






Map
115



**Exquisite ornaments, gifts
& holiday decor for any season**

Just a block east of the Historic Mesilla Plaza

*A Christmas Shoppe offering a unique
and enjoyable year-round seasonal
shopping experience.*

(575) 524-3333
2402 Avenida de Mesilla
www.seasonsdemesilla.com

Tours and Day Trips

BASILICA OF SAN ALBINO

On the north end of the Plaza, originally built of adobe in 1855, the church was rebuilt to its present structure in 1906. It became a basilica on November 1, 2008. Visiting hours vary during the year, see website for accurate dates.



FRONTIER ADVENTURES

Relive the enchantment of the old west. Your authentic stagecoach is ready for that special occasion. An assortment of horse-drawn vehicles provide you and your group with an exclusive day or evening. Frontier Adventures can accommodate any size group at our location or yours. Delight and enjoy the experience, while we provide delicious food and premier entertainment to your specifications...an unforgettable adventure for the exceptional group of family outing!



LA MORENA WALKING TOURS

Walking Tours of Historic Mesilla. Dressed in the style of a Mexican Revolutionary woman of the 1800's, Preciliana Sandoval, a fifth-generation native historian invites you to take a walking tour of Mesilla. Visit historic battle sites. Hear romantic ghost stories and feel the centuries old grace of Mesilla.



SOUTHWEST EXPEDITION'S


Offering custom, FUN tours with professional guides that always have your safety and well being in mind. Southwest Expeditions can organize your tour from 4 to 30 guests. Transportation is included. Local tours include, aerial tours, plane tours, jeep tours/van tours, Leasburg Dam river runs, Mesilla river runs, star parties (nights), bike rentals, bike tours and Billy the Kid reenactments on the Plaza. Major activities and overnight accommodations from outdoor camping, quaint bed and breakfast lodging to luxury hotels, can be part of your adventure getaway with Southwest Expeditions.




BILLY THE KID TOUR

(Outlaw Rock at Stolen Horse Canyon, Mesilla Jail at Billy the Kid Gift Shop, Historic Fort Selden). This tour follows Billy the Kid's trail past his most notorious hideouts, one at the Old Mesilla plaza and the other at Outlaw Rock in the Organ Mountains-Desert Peaks National Monument. Outlaw Rock is in Faulkner Canyon (also known as Stolen Horse Canyon) where Billy and his gang left their mark, then back to Old Mesilla where Billy escaped from jail on the historic plaza. Western history and cultural flair meet natural beauty in Faulkner Canyon and the Robledo Mountains Wilderness.





**SILVER
ASSETS**
in Old Mesilla
Est. in 1989 - Locally
Owned & Operated



1948 Calle de Santiago
Mesilla, NM 88046
575-523-8747
www.silverassetsonline.com

Day Trips



By David Jones, via Wikimedia Commons

WHITE SANDS NATIONAL MONUMENT

Like no place else on earth, the dunes rise from the heart of the Tularosa Basin is one of the world's great natural wonders - the glistening white sands of New Mexico. Great wave-like dunes of gypsum sand have engulfed 275 square miles of desert, creating the world's largest gypsum dunefield.

TO DO:

Day picnicking, sledding, horseback riding, bicycling, wildlife viewing, photography

GET THERE:

East of Old Mesilla Approx: 55 Miles
(575) 479-6124 • www.nps.gov



By Stiffeher, via Wikimedia Commons

NEW MEXICO MUSEUM OF SPACE HISTORY

The sole mission of the museum is to educate the people of New Mexico and our visitors from around the world in history, science, and technology of space. The museum stresses the significant role that the state of New Mexico has played in the development of the U.S. Space Program through collecting, preserving, and interpreting significant artifacts relevant to the history of space. While here, visit the Clyde W. Tombaugh IMAX Dome Theater and Planetarium. Open daily from 9 am-5 pm (closed Thanksgiving and Christmas). Admission is \$4-\$6.

GET THERE:

East of Old Mesilla on Hwy. 70.
3198 State Rte 2001, Alamogordo, NM.
Approx: 65 Miles
(877) 333-6589 www.nmspacemuseum.org

THE ORGAN MOUNTAINS DESERT PEAKS NATIONAL MONUMENT

This monument was established to protect significant prehistoric, historic, geologic, and biologic resources of scientific interest, and includes four areas: the Organ Mountains, Desert Peaks, Potrillo Mountains, and Doña Ana Mountains.

TO DO:

Hiking, biking, fishing, camping, picnicking, wildlife viewing, horseback riding

GET THERE:

East of Old Mesilla Approx: 12 Miles
www.blm.gov

MESILLA VALLEY BOSQUE STATE PARK

This day-use park is located along the Rio Grande.

TO DO:

Bird watching, trails and education programs

GET THERE:

West of Old Mesilla Approx: 2 Miles
5000 Calle Del Norte (575) 523-4398
www.nmparks.com



Mesilla Valley
Fine Arts
Gallery

Map
69

Our regional artists offer original art in many media, including: painting, pastel, drawing, photography, jewelry, ceramics, fabric collage, wood-turning, stained glass, gourds, basketry and more - as well as note cards and prints.

Open 7 days a week

10am - 5pm

Closed:

Thanksgiving & Christmas

575.522.2933

2470-A
Calle de Guadalupe



FARMESILLA

FARM TO MARKET

- Fresh Local Produce
- Coffee, Tea & Juices
- Sandwiches & Salads
- Salsas, Jams & Honey
- Candles & Home Goods
- Beer and Wine

575-652-4626

1840 Avenida de Mesilla, Las Cruces, NM 88005
FARMesilla.com



Facebook.com/FARMesilla @FARMesilla

Map
38



By Christina Vaquera

DRIPPING SPRINGS NATURAL AREA

This area has over four miles of easy hiking trails, including the Dripping Springs Trail, which shows off desert scrub and low elevation pinon-juniper and oak woodlands. The area also boasts excellent wildlife viewing opportunities. It offers very good year-round viewing of desert mule deer, coyote, and occasional sightings of mountain lion.

TO DO:
Camping, picnicking, wildlife viewing

GET THERE:
East of Old Mesilla Approx: 12 Miles
(575) 525-4300 www.blm.gov



CITY OF ROCKS STATE PARK

City of Rocks is made up of a unique formation of rocks that was created by a combination of volcanic activity and erosion. It is located about halfway between Silver City and Deming.

TO DO:
Camping, hiking trails, excellent mountain biking, wildlife viewing, birding, star gazing, picnic areas and a desert botanical garden

GET THERE:
West of Las Cruces on I-10 to Deming Approx: 65 miles
(575) 536-2800 www.emnrd.state.nm.us



By Land Rover MENA, via Wikimedia Commons

SPACEPORT AMERICA VISITOR CENTER TRUTH OR CONSEQUENCES

Visitors begin their journey at the Spaceport America Visitor Center, a historic adobe building located at 301 S. Foch St., Truth or Consequences, NM 87901. A wonderful contrast of the old frontier meeting the new and packed with exciting educational and interactive space exhibits. Here visitors can purchase tour tickets and official Spaceport America merchandise prior to journeying out to the Spaceport America site on rolling multi-media theater shuttles.

GET THERE:
North on I-25 Approx: 65 miles
30 miles East of Truth or Consequences, NM in Upham
(575) 267-8888 • www.spaceportamerica.com

ELEPHANT BUTTE LAKE STATE PARK

As New Mexico's largest State Park, there is still plenty of water and plenty of beach room left in the lake. Elephant Butte Lake can accommodate watercraft of many styles and sizes: kayaks, jet skis, pontoons, sailboats, ski boats, cruisers, and houseboats. Besides sandy beaches, the State Park offers restrooms, picnic areas, playgrounds, and developed sites with electric and water hook-ups for RV's.

TO DO:
Camping, fishing, boating or just being outdoors

GET THERE:
North of Las Cruces on I-25 Approx: 70 miles
(575) 744-5923 www.emnrd.state.nm.us

GERONIMO TRAIL NATIONAL SCENIC BYWAY

The Geronimo Trail Scenic Byway was established to showcase and preserve the Corridor area for its historic multi-cultural heritage and outstanding natural resources. Starting and ending in the Gila Wilderness, this 150 mile byway goes through mountain forests and dry deserts, to the largest lakes in the state. The Geronimo Trail Visitors Center, near the center of the designated Byway, is located at 301 S. Foch, in Truth or Consequences.

TO DO:
Sightseeing at ghost towns, shopping, eateries and hiking
(575) 894-1968 • www.geronimotrail.com



By Zerezhk, via Wikimedia Commons

GILA NATIONAL FOREST

The Gila is 3.3 million acres of forested hills, majestic mountains and range land (6th largest National Forest in the country). It is probably best known for its wilderness areas, in particular the Gila Wilderness - the first wilderness in the United States. The magnificent mountain scenery, cool summer temperatures and relatively warm winters permit a wide range of recreational opportunities during all seasons.

TO DO:
Camping, hiking, picnicking, fishing, horseback riding, wildlife, big game hunting.

GET THERE:
West on I-10 to Deming bypass to Silver City. Approx: 70 miles
(575) 388-8201 • www.fs.usda.gov



By National Park Service Digital Image Archives

GILA CLIFF DWELLINGS NATIONAL MONUMENT

The Gila Cliff Dwellings National Monument is located in the Gila Wilderness inside the Gila National Forest. The 533-acre national monument contains the ruins of what is believed to be the dwellings of the Mogollon people from between the 1280s through the early 1300s. They used natural caves to build interlinked dwellings. Archaeologists have identified 46 rooms in the five caves and believed they were occupied by 10 to 15 families.

TO DO:
Camping, hiking and picnicking

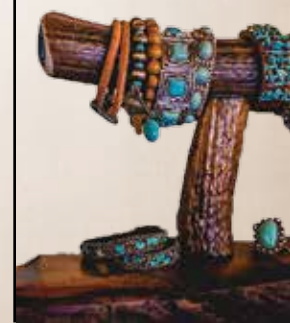
GET THERE:
West on I-10 to Deming bypass to Silver City. Approx: 95 miles (575) 536-9461 • www.nps.gov

Merchants

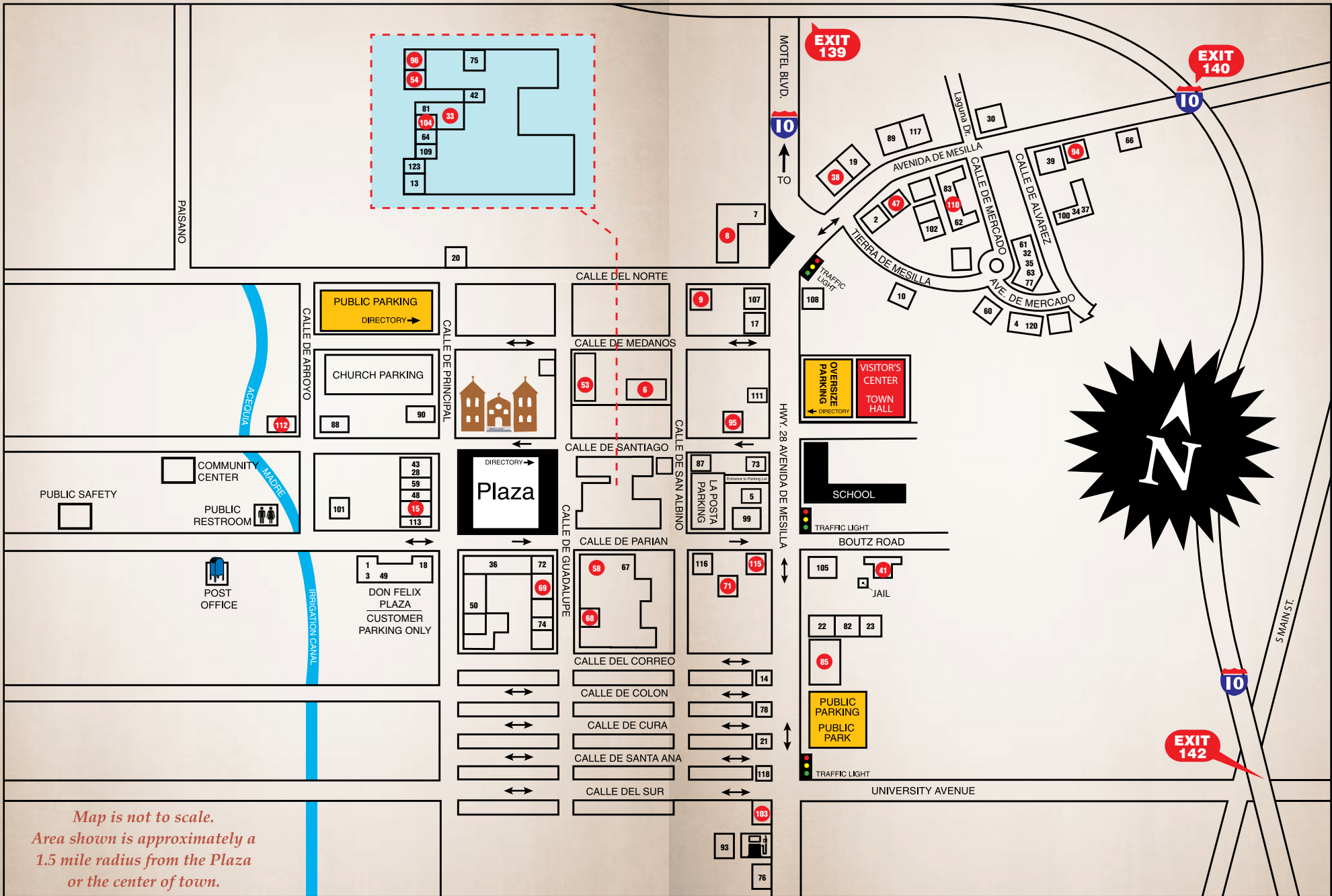
in Mesilla



1. **A REAL MAN**
2290 Calle de Parian
2. **ACTON ACADEMY OF LAS CRUCES**
1730 Tierra de Mesilla
3. **ADOBE MODERN**
2410 Calle de Principal
4. **ADOBE PATIO GALLERY & STUDIO**
1765 Calle de Mercado
5. **ADVENTURE TRAVEL**
2340 Avenida de Mesilla
6. **AGAVE ARTISTS**
2250 Calle de San Albino
7. **ANDELE'S TORTILLERIA DE MESILLA**
1950 Calle del Norte
8. **ANDELE'S RESTAURANT**
1950 Calle del Norte
9. **ANDELE'S DOG HOUSE PATIO GRILL**
1983 Calle del Norte
10. **ARTHRITIS TREATMENT SPECIALISTS**
1770 Tierra de Mesilla
11. **B&J SAND AND GRAVEL**
2929 Calle de Guadalupe
12. **B.W.D. CONSTRUCTION**
2532 Calle del Norte
13. **BILLY THE KID GIFT SHOP**
2385 Calle de Guadalupe
14. **BLACK RAT TATTOO**
1901 Calle de Correo
15. **BOWLIN'S MESILLA BOOK CENTER**
2360 Calle de Principal
16. **BUSTAMANTE FARM**
2300 W. Union Ave.
17. **CAFÉ DE MESILLA**
2190 Avenida de Mesilla
18. **CAFE DON FELIX**
2410 Calle de Principal
19. **CASA BONITA**
1820 Avenida de Mesilla
20. **CASA DE ROSIE**
2140 Calle del Norte
21. **CHALA'S WOOD FIRED GRILL**
2790 Avenida de Mesilla
22. **CHEEKY CHAPS**
2521 Avenida de Mesilla
23. **CHEEKY CHICKS**
2521 Avenida de Mesilla, Ste. C
24. **CIRCLE 7 DEVELOPMENT**
1701 Calle de Mercado, Ste. 5
25. **CLASSIC DESIGNS, LLC**
2170 Calle de Parian
26. **DAYBREAK LIFE COACHING, LLC**
1680 Alvarez, A-4
27. **DEBRA VANCE ART GALLERY**
(575) 964-7700
By Appointment
28. **DEL SOL**
2322 Calle de Principal
29. **DESERT BOTANICALS**
2488 Calle de Guadalupe
30. **DH LESCOMBES**
1720 Avenida de Mesilla
31. **DISCOUNT FIREWORKS**
2531 Avenida de Mesilla
32. **DONA ANA ARTS COUNCIL, INC.**
1740 Calle de Mercado
33. **DOUBLE EAGLE DE MESILLA**
2355 Calle de Guadalupe
34. **DRY POINT DISTILLERS**
1680 Calle de Alvarez
35. **EDWARD JONES & CO.**
1701 Calle de Mercado, Ste. 4
36. **EL PATIO BAR**
2171 Calle de Parian
37. **ENCHANTED BEAUTY**
1680 Alvarez, Ste. C
38. **FARMESILLA**
1840 Avenida de Mesilla
39. **FIRST AMERICAN BANK**
1553 Avenida de Mesilla
40. **G.B. QUARTER HORSES**
1563 Snow Rd.
41. **GADSDEN MUSEUM**
1875 Boutz Rd.
42. **GALERIA AZUL**
2335 Calle de Guadalupe
43. **GALERIA ON THE PLAZA**
2310 Calle de Principal
44. **GARCIA HONEY FARM**
2168 Calle de los Huertos
45. **GERALD DONAHUE (SURVEYING)**
3010 Bowman Ave.
46. **GUTIERREZ LANDSCAPE ASSOC.**
2260 Calle de Santiago
47. **HACIENDA DE MESILLA**
1891 Avenida de Mesilla
48. **HEART OF THE DESERT PISTACHIOS**
2350 Calle de Principal
49. **IMPRESSIONS DE MESILLA**
2290 Calle de Parian
50. **INDIGO YOGA**
2489 Calle de Principal
51. **IRONWORKS UNLIMITED**
2293 Calle de Parian
52. **J.E. WELLS ENTERPRISES**
620 Ritter Rd.
53. **JOSEFINA'S OLD GATE CAFÉ**
2215 Calle de Guadalupe
54. **JULIENNE JEWELRY**
2329 Calle de Guadalupe
55. **KNEADING TO HEAL**
2222 Avenida de Mesilla
56. **LA CASA DE MARTINEZ**
2140 Calle del Norte
57. **LA MORENA WALKING TOURS**
2755 Calle de San Albino
58. **LA POSTA DE MESILLA**
2410 Calle de San Albino
59. **LA ZIA**
2350 Calle de Principal
60. **LAS CRUCES ACADEMY, INC.**
1755 Calle de Mercado
61. **LAS CRUCES BULLETIN**
1740 Calle de Mercado
62. **LAS CRUCES HOMES & LAND**
1701 Calle de Mercado
63. **LEAVITT GROUP SOUTHWEST**
1740 Calle de Mercado, Ste. E
64. **LEGACY PECANS & COMPANY**
2456 Calle de Guadalupe
65. **LUCERO ENTERPRISES**
2960 Camino Castillo
66. **LUNA ROSSA**
1321 Avenida de Mesilla
67. **MATTEO**
2410 Calle de San Albino
68. **MESILLA VALLEY FILM SOCIETY FOUNTAIN THEATRE**
2469 Calle de Guadalupe
69. **MESILLA VALLEY FINE ARTS**
2470 Calle de Guadalupe, Ste. A
70. **MJM RETAIL GROUP**
2290 Calle de Parian, Ste.A
71. **MY RICH SISTER'S CLOSET**
1937 Calle de Parian
72. **NAMBE, LLC**
2109 Calle de Parian
73. **NM VINTAGE MARKET**
2310 Avenida de Mesilla
74. **NM VINTAGE WINES, BEERS + CIGARS**
2461 Calle de Principal
75. **OLD BARREL TEA SPICE COMPANY**
2319 Calle de Guadalupe
76. **OLD MESILLA KENNEL**
3036 S. Hwy. 28
77. **PAISANO CAFÉ**
1740 Calle de Mercado, Ste. C
78. **PALACIO BAR**
2600 Avenida de Mesilla
79. **PAT TAYLOR, INC.**
2171 Calle de los Huertos
80. **PECAN MESILLA**
2806 Valle Grande
81. **PEPPERS**
2355 Calle de Guadalupe
82. **PI PILATES**
2521 Avenida de Mesilla
83. **PISTOLEROS BARBER SHOP**
1701 #4 Calle de Mercado
84. **PLANET FIREWORKS, LLC**
Calle de Mercado
85. **RISTRAMNN CHILE CO.**
2531 Avenida de Mesilla
86. **ROSE CARDS**
2341 Arroyo
87. **RUBY SUN**
2301 Calle de San Albino
88. **SALON DE MESILLA**
2172 Calle de Santiago
89. **SALUDI! DE MESILLA**
1800 Avenida de Mesilla, Ste B
90. **SAN BASILICA GIFT SHOP**
2070 Calle de Santiago
91. **SANCHEZ, ABEL G.**
2991 Estrada Rd.
92. **SENIOR HOME INSTEAD**
2470 Calle de Guadalupe
93. **SHORTY'S FOOD MARKET**
2920 S. Hwy. 28
94. **SIESTA RV PARK**
1551 Avenida de Mesilla
95. **SILVER ASSETS**
1948 Calle de Santiago
96. **SILVER STUDIO 925**
2309 Calle de Guadalupe
97. **SILVIA MARINAS ART CONSERVATORY**
2327 Santa Ana
98. **SIMPSON CREATIONS, LLC**
1850 Avenida de Mesilla
99. **SINUATE MEDIA**
1910 Calle de Parian
100. **SOUTHWEST VISIONS SPECIALISTS**
1680 Alvarez, Ste. D
101. **SPA 232 MED SPA & BEAUTY LOUNGE**
2220 Calle de Parian
102. **SPA•OLOGY**
1799 Avenida de Mesilla
103. **SPOTTED DOG BREWERY, LLC**
2900 S. Hwy 28
104. **STARAH'S JEWELS**
2365 Calle de Guadalupe
105. **STEINBORN & ASSOCIATES**
1885 Boutz Rd.
106. **SUN VISTA CONSTRUCTION**
2640 Calle del Oeste
107. **THAI DELIGHT**
2184 Avenida de Mesilla
108. **THE BEAN**
2011 Avenida de Mesilla
109. **THE CHOCOLATE LADY**
2379 Calle de Guadalupe
110. **THE EMERALD ISLE**
1701 Calle de Mercado, Ste. 2
111. **THE HAIR AND BODY SHOP**
2222 Avenida de Mesilla
112. **THE POTTERIES**
2260 Calle de Santiago
113. **THUNDERBIRD DE LA MESILLA**
2380 Calle de Principal
114. **TINA K RICHARDSON, LPCC**
1680 Alvarez, Ste. A
115. **TIS THE SEASON DE MESILLA**
2402 Avenida de Mesilla
116. **TRU ART OF THE EARTH**
2411 Calle de San Albino
117. **TURQUOISE TEEPEE**
1800 Avenida de Mesilla
118. **VALLEY PLUMBING**
2800 Avenida de Mesilla
119. **VERIZON WIRELESS (VAW), LLC**
3385 Avenida de Mesilla
120. **VIGIL & ASSOC. ARCHITECTS**
1765 Calle de Mercado
121. **VIVI'S WELL DRILLING**
3077 Calle de Guadalupe
122. **WESTMARK PRODUCTIONS, INC.**
3120 McDowell
123. **WILD WEST EXPRESS-O**
2385 Calle de Guadalupe



Find your way in Old Mesilla



Map is not to scale.
Area shown is approximately a
1.5 mile radius from the Plaza
or the center of town.

2020 Calendar of events

WEEKLY

ARTS/CRAFTS & FARMERS MARKET

Fridays - 11:00 a.m. to 4:00 p.m.

Sundays - 9:00 a.m. to 4:00 p.m.

FEBRUARY

8th Cupid's Chase 5K

9th For the Love
of Art Show

MAY

2nd & 3rd CINCO DE MAYO
FIESTA

20th Ride of Silence

JUNE

20th Raft the Rio Race

JULY

4th Fireworks Display

SEPTEMBER

12th & 13th DIEZ Y SEIS DE
SEPTIEMBRE FIESTA

OCTOBER

3rd & 4th Jazz Happening

10th Los Leones Car Show

30th Halloween Haunted
House/Carnival

30th & 31st Dia de los Muertos

NOVEMBER

1st Dia de los Muertos

7th & 8th Native American
Art Show

11th Veteran's Day Ceremony

16th El Tratado de La Mesilla

DECEMBER

4th Christmas Tree
Lighting

24th CHRISTMAS EVE
on the Plaza

For more information go to: www.mesillanm.gov
(Dates scheduled to change depending on availability.)

STAY CONNECTED ANYTIME, ANYWHERE!



[youtube.com/user/
VisitNewMexico](https://youtube.com/user/VisitNewMexico)



facebook.com/oldmesilla



instagram.com/oldmesilla



twitter.com/oldmesilla

www.mesillanm.gov





Arts & Crafts Farmer's Market

**WEEKLY FRIDAYS
& SUNDAYS**

Set in our historic plaza, Old Mesilla's Mercado is one of America's oldest markets since 1857.

More than 155 years later, our Mercado continues to be at the center of our town showcasing finely hand-crafted jewelry, original artwork and locally grown produce.

Fridays -11:00 a.m. to 4:00 p.m.
Sundays - 9:00 a.m. to 4:00 p.m.

Hours subject to change, please visit our website www.mesillanm.gov or visit our Facebook page for updates.

Political History

Mesilla was named county seat of Doña Ana County in 1856 and incorporated in 1861. In 1958, Mesilla reincorporated. On Sunday, August 27, 1871, organized members of both the Democratic and Republican Parties announced rallies on the Plaza. The parties agreed to meet



in different areas. Agitators from both parties wanted to close their respective meetings with a procession around the Plaza. Whiskey flowed freely. When the two processions met, shots were fired and several fights broke out. Nine men were killed and between 40 and 50 were wounded. Troops were summoned from Fort McRae to restore order and remained a few nights until calm was restored. With no judge in the district at the time, a judge was summoned from another district to hold an investigation. After three days, he decided it was too dangerous for any investigation and returned home without any action and no one was ever convicted.

For more Old Mesilla history visit www.mesillanm.gov



Presenting independent, foreign & documentary films in an intimate, historical setting

New feature starts every Friday!

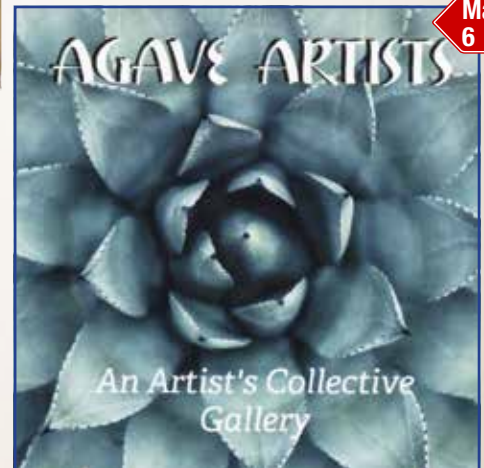
2469 Calle de Guadalupe in Mesilla



www.mesillavalleyfilm.org

f 575.524.8287

AGAVE ARTISTS



An Artist's Collective
Gallery

Featuring
20 Local Artists
2250 Calle de San Albino
Mesilla, NM 88046
Thurs - Mon 11-5
575-339-9870
www.agaveartists.com

A little more history

Many of the structures in Mesilla's historic district have been classified as "significant" on the National Register of Historic Places because they are either architecturally outstanding or exceptionally important in the history of the community.



Rio Grande Collection at NMSU

BASILICA OF SAN ALBINO

Around 1855 San Albino church was built at the north end of the plaza. The original church was adobe and had only one steeple. The present church was built in the early 1900s around the old adobe church. When it was finished, the old church was dismantled inside the new church and carried out the front door. The church was named on San Albino Day in early March, a date associated with the completion of a local water ditch that would provide irrigation to the settler's communal fields. San albino is appropriately a water saint.

Location: 2280 Calle de Principal, Mesilla, NM 88046 • 575-526-9349



THE PLAZA

Because of its historical significance in the state as well as the nation, the Old Mesilla Plaza was declared a New Mexico state monument on September 10, 1957. Initially, it was listed on the National Register in January, 1982 as a National Historic Landmark. Then, Mesilla's historic district was added to the National Registry in February, 1985.



FOUNTAIN THEATRE

For 25 years, the Mesilla Valley Film Society has been presenting the best independent, foreign and documentary films in the southwest at the Fountain Theatre, one-half block off the plaza. The theatre has a long history of entertaining the locals. After buying the building in 1905, Albert Fountain Jr. began producing plays, vaudeville, light opera, and lantern slide shows. It has operated as both a live theatre and cinema since that time. In 1989 the MVFS began managing the venue. There are screenings every night plus matinees on weekends. For a complete schedule, ticket prices and membership information, go to www.mesillavalleyfilm.org.

Location: 2469 Calle de Guadalupe, Mesilla, NM 88046 • 575-524-8287

Your Old Mesilla Jewelry Stop!



Map 104

Navajo,
Zuni Pueblo
& Peruvian
Jewelry



Laura Burch
Women's
Accessories
and
unique Gifts

2365 Calle de Guadalupe, Mesilla, NM 88046 • (575) 526-2663



Galleries

The Mesilla art scene is always evolving with local artist representing our great region with fine skills, making our Town, a thriving art and culture destination. You will find Native American Art, Sculptures, Paintings, Jewelry, Clothing and much more. We invite all to visit our Galleries and take a little of us back with you.

ADOBE PATIO GALLERY & STUDIO

1765 Calle de Mercado

AGAVE ART GALLERY

2250 Calle de San Albino

DEBRA VANCE ART GALLERY

(575) 964-7700 By Appointment

GALERIA AZUL

2335 Calle de Guadalupe

GALERIA ON THE PLAZA

2310 Calle de Principal

MESILLA VALLEY FINE ARTS

2470 Calle de Guadalupe, Ste. A

Billy the kid



The Territory of New Mexico, in the mid-1870s-80s, experienced a wave of rampant lawlessness, unparalleled in the history of the United States. One must walk a mile in their shoes before coming to conclusions about the lives of men and boys of that era.

Henry McCarty, alias Kid Antrim, alias William H. Bonney, alias Billy the Kid, was born in the East and came to New Mexico in the 1870s, starting out on his own from Silver City. In Lincoln he became involved in the famous Lincoln County War. This was a time of political strife and financial power struggles. In most cases one had to kill or be killed. Upon the death of John Tunstall, Billy vowed vengeance on every man who participated in that cruel, wanton murder. Later, The Kid was involved in the death of six men. The vendetta led him through the heart of New Mexico and the chase for The Kid began.

Patrick Floyd Garrett, born in Alabama, led a successful life as a buffalo hunter in Texas before drifting into New Mexico. His election as sheriff of Lincoln County drew him into this legend. He was a good sheriff at a time that New Mexico needed such a man.

Billy's saga continued on to Las Vegas by wagon, to Santa Fe by railcar, through Albuquerque, on to Old Mesilla for trial. Under heavy guard they trudged through La Luz, Alamogordo, and back to Lincoln where Billy performed his daring escape and killed his guards, Bell and Ollinger. Now, with a wanted poster for Billy the Kid, Pat Garrett was hot on his trail back to Old Fort Sumner. There, on July 14, 1881, Pat Garrett killed the famous outlaw in the still standing Maxwell house.



Map 94

Offering a quiet, relaxed atmosphere with shaded, pull-thru spaces, a convenience store and RV supplies for your camping needs.

- Full Hookup w/30 or 50 amps
- Free Cable TV & WI-Fi available
- Laundry & Showers
- Pop-up Sites Available w/water & electricity
- Close to Restaurants & Shopping
- Mobile RV Repair & Service available on site from local technicians
- Pets Welcome

JUST AROUND THE CORNER FROM OLD MESILLA

1551 Avenida de Mesilla
Las Cruces, NM 88005
800-414-6816 or (575)523-6816

My Rich Sister's Closet
High End Consignments
1937 Calle de Parian
(575) 222-0232
Tues. - Sat.

Top Brands
Slightly Used
Women's Boutique
Great Condition

Map 71



Dining in Mesilla

Humble towns like Old Mesilla have recently become all the rage and are now favored by people around the world as preferred vacation spots. Old Mesilla has its own unique draw with local roots dating back to the early 1800s. Part of its appeal can be traced to the small-town dining experience. Whether it's the array of flavors, home-style cooking or friendly staff, there is plenty to love about Old Mesilla dining. Among adobe brick architecture,

viga and tin ceilings, foodies can dine where outlaws sat plotting their next getaway or enjoy a glass of wine in a room accompanied by ghosts. If this is your cup of tea, Old Mesilla is sure to suit you.

With a variety ranging from toasted corn tortillas filled with frijoles and red chile con carne topped with lettuce tomatoes and cheese, to the only dedicated beef aging room in New Mexico, and homemade green chile posole to freshly brewed coffees and pastries, there is always something to satisfy your Southern New Mexico food kick.



ANDELE'S DOG HOUSE

1983 Calle del Norte (575) 526-1271 www.andelerestaurante.com

ANDELE'S RESTAURANT

1950 Calle del Norte (575) 526-9631 www.andelerestaurante.com

CAFÉ DE MESILLA

2190 Avenida de Mesilla (575) 524-0000 www.cafedemesilla.com

CHALA'S

2790 Avenida de Mesilla (575) 652-4143

D.H. LESCOMBES WINERY & BISTRO

1720 Avenida de Mesilla (575) 524-2408 www.stclairwinery.com

DON FELIX CAFÉ

2290 Calle de Parian (575) 652-3007

DOUBLE EAGLE RESTAURANT

2355 Calle de Guadalupe (575) 523-6700 www.doubleeagleonline.com

DRY POINT DISTILLERS

1680 Calle de Alvarez (575) 652-3414 www.drypointdistillersnm.com

FARMESILLA

1840 Avenida de Mesilla (575) 642-4536 www.farmesilla.com

HACIENDA DE MESILLA

1891 Avenida de Mesilla (575) 652-4953 www.haciendademesilla.com

JOSEFINA'S OLD GATE CAFÉ

2261 Calle de Guadalupe (575) 525-2620 www.josefinasoldgate.com

LA POSTA DE MESILLA RESTAURANT & CANTINA

2410 Calle de San Albino (575) 524-3524 www.laposta-de-mesilla.com

LUNA ROSSA WINERY

1321 Avenida de Mesilla (575) 526-2484 www.lunarossawinery.com

NM VINTAGE WINES, BEERS + CIGARS

2461 Calle de Principal (575) 523-9463 www.NMVintageWines.com

PAISANO CAFÉ

1740 Calle de Mercado (575) 524-0211 www.paisanocafe.com

PEPPER'S CAFÉ

2355 Calle de Guadalupe (575) 523-4999 www.double-eagle-mesilla.com

SALUD! DE MESILLA

1800 Avenida de Mesilla (575) 527-2869 www.SaluddeMesilla.com

SPOTTED DOG BREWERY

2920 Avenida de Mesilla (575) 650-2729 www.spotteddogbrewery.com

THAI DELIGHT

2184 Avenida de Mesilla (575) 525-1900

THE BEAN

2011 Avenida de Mesilla (575) 527-5155 www.thebeanmesilla.com

- ¡Ánde! Restaurante
- ¡Ánde! Dog House
- Adobe Modern
- Café de Mesilla
- Chala's Wood Fire Grill
- D.H. Lescombes Winery & Bistro
- Don Felix Cafe
- Double Eagle
- Dry Point Distillers
- El Patio Cantina
- FarMesilla
- Hacienda de Mesilla
- Heart of the Desert
- Josefina's Old Gate
- La Posta de Mesilla
- Legacy Pecans
- Luna Rossa Winery & Pizzeria
- NM Vintage Market
- NM Vintage Wines, Beers, & Cigars
- Old Barrel Tea Co.
- Palacio Bar
- Salud! de Mesilla
- Spotted Dog Brewery
- Thai Delight
- The Bean Cafe



EXPERIENCE
MESILLA

Mesilla restaurant, coffee & tea shop, and bar owners have collaborated to create a fun, unique way for you to discover Mesilla.

A V.I.P. program with benefits that are good all year long. Save money, get discounts and freebies, all while having a truly unique dining, drinking, and dancing adventure.

Get your 2020 VIP Glass TODAY!

**A V.I.P.
PROGRAM
LIKE
NO
OTHER!**

Learn More: ExperienceMesilla.com • Share your fun with us, [#experiencemesilla](https://twitter.com/experiencemesilla)

Map 103

MESILLA'S ONLY BREWERY!

SPOTTED DOG BREWERY

2900 AVENIDA DE MESILLA
575-650-2729

Featuring 16+ House Beers and a Rotating Weekly Menu
Live music Wednesdays at 8PM
FAMILY OWNED + OPERATED // ESTABLISHED 2014




HOURS:
Mon: 11:30am - 10:30pm Fri: 11:30am - 12:00am
Tue: 11:30am - 10:30pm Sat: 11:30am - 12:00am
Wed: 11:30am - 10:30pm Sun: 12:30am - 08:30pm
Thu: 11:30am - 10:30pm

Find us online! spotteddogbrewery.com

Map 33

DOUBLE EAGLE
THE CROWN JEWEL OF HISTORIC OLD MESILLA

- ~ Aged Steaks
- ~ Award Winning Margaritas
- ~ Nationally Recognized Wine List
- ~ World's Largest Green Chile Cheeseburger
- ~ Historic Building Filled with Art, Antiques and Crystal Chandeliers
- And Two Ghosts!**





(575) 523-6700
www.doubleeagleonline.com



Map 53


Josefina's
old gate
Café • Inn • La Sala

Visit this quaint adobe house known simply as "Josefina's." We have long been a symbol of warmth and welcome in the Historic Old Mesilla Plaza.

Featuring homemade dishes, desserts, wine and beers.

2261 Calle de Guadalupe,
Mesilla, NM
575-525-2620
www.josefinasoldgate.com

 Like us  [tripadvisor](https://www.tripadvisor.com)
get the truth, then go.™



Accommodations

Stay in Old Mesilla or Close By



PLACE	ADDRESS	PHONE	WEBSITE
CASA DE ROSIE	2140 Calle del Norte	(575) 993-1410	www.casaderosie.com
HACIENDA DE MESILLA	1891 Avenida de Mesilla	(575) 652-4953	www.haciendademesilla.com
JOSEFINA'S OLD GATE	2261 Calle de Guadalupe	(575) 525-2620	www.josefinasoldgate.com

RV & CAMPGROUNDS

Coachlight Inn	301 S. Motel Blvd.	(575) 386-0636	www.zianet.com/coachlight
Dalmont's RV Park	2224 S. Valley Dr.	(575) 523-2992	
Hacienda RV	740 Stern Dr.	(575) 528-5800	www.haciendarv.com
Las Cruces KOA	814 Weinrich Rd.	(575) 526-6555	www.koa.com
Siesta RV Park	1551 Avenida de Mesilla	(575) 523-6816	www.siestarvpark.com
Sunny Acres RV Park	595 N. Valley Dr.	(575) 524-1716	www.sunnyacresrv.com

BED & BREAKFAST

Lundeen Inn of the Arts	618 S. Alameda Blvd.	(575) 526-3326	www.innofthearts.com
-------------------------	----------------------	----------------	----------------------

HOTELS/MOTELS

A Day's End Motel	755 N. Valley Dr.	(575) 524-7753	
America's Best Value Inn	901 Avenida de Mesilla	(575) 524-8603	www.americasbestvalueinn.com
Big Chile Inn	2160 W. Picacho Ave.	(575) 524-8627	www.abvilascruces.com
Best Western Mission Inn	1765 S. Main St.	(575) 524-8591	www.bwmissioninn.com
Bruce Motel	800 S. Main St.	(575) 526-1644	
Budget Inn (35 rooms)	2255 W. Picacho Ave.	(575) 523-0365	
Century 21 Motel	2454 N. Main St.	(575) 524-9626	
Coachlight Inn	301 S. Motel Blvd.	(575) 526-3301	www.zianet.com/coachlight/
Comfort Inn West	1300 Avenida de Mesilla	(575) 527-1050	www.comfortinn.com
Comfort Suites – Triviz	2101 S. Triviz Dr.	(575) 522-1300	www.comfortsuites.com

PLACE	ADDRESS	PHONE	WEBSITE
Comfort Suites – Telshor	236 N. Telshor Blvd.	(575) 521-1030	www.choicehotels.com
Days Inn	755 Avenida de Mesilla	(575) 636-1602	www.daysinn.com
Courtyard by Marriott	456 E. University Ave.	(575) 526-1722	www.marriott.com
Desert Lodge	1900 West Picacho Ave.	(575) 524-1925	
Desert Oasis Inn	1765 W. Picacho Ave.	(575) 523-6858	
Drury Inn & Suites	1631 Hickory Loop	(575) 523-4100	www.druryhotels.com
Econo Lodge	2585 S. Valley Dr.	(575) 527-2000	www.econolodge.com
Fairfield Inn	2101 Summit Court	(575) 522-6840	www.marriott.com
Hampton Inn & Suites	2350 E. Griggs Ave.	(575) 527-8777	www.hamptoninn.com
Hampton Inn & Suites	1641 Hickory Loop	(575) 541-8777	www.hamptoninn3.hilton.com
Hilton Garden Inn	2550 S. Don Roser Dr.	(575) 522-0900	www.hiltongardeninn.com
Holiday Inn Express & Suites Las Cruces North	2142 Telshor Court	(575) 522-0700, (888) HOLIDAY	www.holidayinnexpress.com
Holiday Inn Express & Suites	2635 S. Valley Dr.	(575) 527-9947	www.holidayinnexpress.com
Home 2 Suites by Hilton	1120 N. Telshor	(575) 527-6491	www.home2suites3.hilton.com
Hotel Encanto de Las Cruces	705 S. Telshor Blvd.	(575) 522-4300	www.hotelencanto.com
La Quinta Inn de Mesilla	790 Avenida de Mesilla	(575) 524-0331	www.laquintalascrucesmesilla.com
La Quinta Inn & Suites Organ Mountain	1500 Hickory Dr.	(575) 523-0100, (800) 531-5900	www.laquintalascrucesorganmt.com
Motel 6 Telshor	2120 Summit Court	(575) 525-2055	www.motel6.com
Motel 9 Las Cruces	235 La Posada Ln.	(575) 525-1010	
Quality Inn & Suites	2200 S. Valley Dr.	(575) 524-4663	
Ramada Hotel & Conference Center	201 E. University Ave.	(575) 613-4693	www.ramadalascruces.com
Royal Host Motel	2146 W. Picacho Ave.	(575) 524-8536	
Sands Motel	1655 S. Main St.	(575) 524-7791	
Sleep Inn	2121 S. Triviz Dr.	(575) 522-1700	www.sleepinn.com
Staybridge Suites	2651 Northrise Dr.	(575) 521-7999	www.lascruces-hotel.com
SpringHill Suites by Marriott	1611 Hickory Loop	(575) 541-8887	www.marriott.com
Super 8 – East / White Sands Area	3405 Bataan Memorial W.	(575) 382-1490	www.super8.com
Super 8 – South	245 La Posada Lane	(575) 448-2004	www.super8.com
Town House Motel	2205 W. Picacho Ave.	(575) 524-7733	
Town Place Suites	2143 Telshor Court	(575) 532-6500	www.marriott.com
Wood Spring Suites LC	2080 S. Triviz Dr.	(575) 528-2046	
Western Inn	2155 W. Picacho Ave.	(575) 523-5399	

Museums



THE J. PAUL TAYLOR VISITOR CENTER

The visitor center is located inside Mesilla Town Hall. Named after former New Mexico State Representative and Mesilla resident J. Paul Taylor, the visitor center is staffed by “Amigos” who are dedicated volunteers that love Mesilla and are eager to promote the culture and historical qualities that make Old Mesilla unique. The local Disabled American Veterans (DAV) Chapter 38 is also located in the Visitors Center, providing services to Disabled Veterans and their families.

The J. Paul Taylor Visitor Center is equipped with brochures, videos, restaurant menus and other interesting information on the area. The center has a great collection of old photos that adorn the walls dating back to the late 1800’s.

Open Monday through Friday 8 a.m. to 5 p.m.
2231 Avenida de Mesilla • (505) 524-3262 ext. 117



THE TAYLOR-BARELA REYNOLDS-MESILLA STATE MONUMENT

Known historically as the Barela-Reynolds Properties, the Taylor donation will become the newest State Monument. The properties were constructed in the late 1850s and listed on the State Register of Historic Places in 1970 and added to the National Register of Historic Places in 1978. In 1958, the Mesilla Plaza was designated a State Monument and today remains on the system’s list.

Although an official State Monument, Mr. & Mrs. Taylor have reserved a life-estate that permits them occupancy of the property for the duration of their lives.

Shown by appointment. If you are interested in a tour, please contact us at:
ffm.mesilla.nm@gmail.com



GADSDEN MUSEUM

This classic Territorial Style house was built around 1860 and enlarged in the 1870s. It is an example of a classic territorial style home with a central hallway with rooms to either side. It was established as a museum and dedicated to Col. Albert J. Fountain in 1931. With a replica of the old Mesilla jail where Billy the Kid was held while awaiting trial and featuring artifacts dating back to the 1500s, the Gadsden Museum holds private collections of many historic items. It is now operated by Mary Alexander Bird, an 8th generation Mesillera.

Shown by appointment (575) 526-6293.



Facilities

Town of Mesilla Facilities and Center

ADMINISTRATIVE DEPARTMENT

Town Clerk/Treasurer/HR
(575) 524-3262 Ext: 105

Deputy Town Clerk/Treasurer/HR
(575) 524-3262 Ext: 115

Accounts Payable
(575) 524-3262 Ext: 115

Utility Clerk/Receptionist
(575) 524-3262 Ext: 100

PUBLIC WORKS DEPARTMENT

Public Works Department Head:
(575) 524-3262 Ext: 109

TOWN OF MESILLA FIRE DEPARTMENT

In an emergency call 9-1-1.
To dispatch a fire unit call Central
Dispatch at (575) 526-0795

MARSHAL'S DEPARTMENT

In an emergency call 9-1-1.
To dispatch a deputy call Central
Dispatch at (575) 526-0795

COMMUNITY DEVELOPMENT DEPARTMENT

(575) 524-3262 Ext: 104

COMMUNITY AND SPECIAL EVENTS

(575) 524-3262 Ext: 116

MUNICIPAL COURT

Office Hours:
Mondays & Thursdays – 8 a.m. to 5 p.m.
Fridays – 10 a.m. to 2 p.m.
Closed on Town Hall Holidays

Court Hours:
Mondays – 8 a.m. to 12 p.m.
Tuesdays – 2 to 4 p.m.
Wednesdays – 1 to 4 p.m.

Trials are held Monday through Friday as scheduled.
For more information (575) 524-1091

COMMUNITY CENTER

2251 Calle de Santiago, Mesilla NM 88046



*We Are Proud To Be a New Mexico Shop Since 2011.
Offering you the Best Quality of Solid Sterling Silver Jewelry
And Southwest Turquoises.
Exclusively Made By Silver Studio. 925*



Please Come By And Check Us Out At The Historic Mesilla Plaza!

2309 Calle De Guadalupe, Mesilla NM 88046

Daily 10am-6pm

silver-studio-925@live.com



La Posta[®] de Mesilla



FIESTA YEAR 'ROUND

Famed for Mexican Food, Steaks and Margaritas since 1939

Award Winning Margaritas and Over 100 Tequilas & Mezcal

Outdoor Patio and Adobe Cantina y Tequileria

La Posta Fiesta-To-Go

Private Dining for Family Gatherings,
Corporate Events, Weddings, Rehearsal Dinners,
Graduations, Birthdays Y Mas!



Still Everyone's Favorite Stop on the Old Butterfield Stagecoach Line

Located on the Plaza in Historic Old Mesilla

Open 7 Days a Week 11am • Breakfast 8am - 11am Saturday & Sunday

575-524-3524 • www.laposta-de-mesilla.com

